

JOHN LOUIS HOME

Solid Wood Home Storage Solutions

Installation Instructions Shelf Mounting L-Clip Hardware

JLH-514WC

Space L clips equidistant within the shelf span. It is recommended to use wall studs if available. If no stud is present, use wall anchors provided.

PARTS LIST:



Quantity: 6
L-Clip



Quantity: 12
#8 1 1/2in. Screw



Quantity: 6
#4 3/4in. Screw



Quantity: 12
Wall Anchor

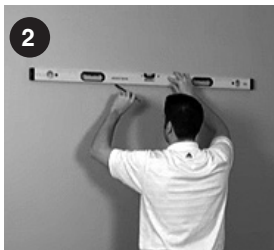
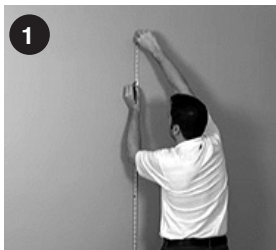
CONTACT US:

For questions concerning missing or damaged parts, technical specs and / or assembly help, please contact John Louis Home Customer Service at:

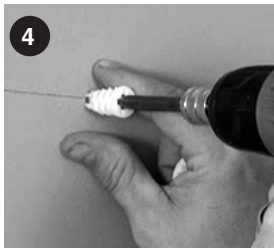
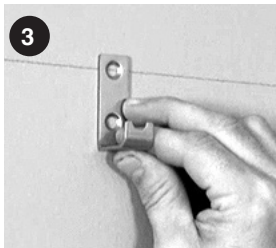
service@johnlouishome.com 1.800.480.6985 (M-F 8am-4pm CST)

STEP 1:

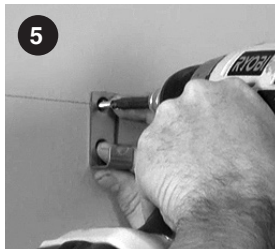
1. Measure up from the floor & mark desired height location.
2. At the mark, draw a level line the distance of the shelf.



3. Center L-clip top screw hole with the level line & mark hole locations.
4. Install wall anchors if no stud is present.



5. Secure L-clip to the wall using # 8 1 1/2 in. screws at hole locations.
6. Repeat for remaining L-clip locations.



7. Place shelf onto L-clip hardware.
8. Secure shelf using #4 3/4 in. screws at all hardware locations.

